



PRESCRIPTION

PATIENT ACCESS

PREPARATION

APPLICATION

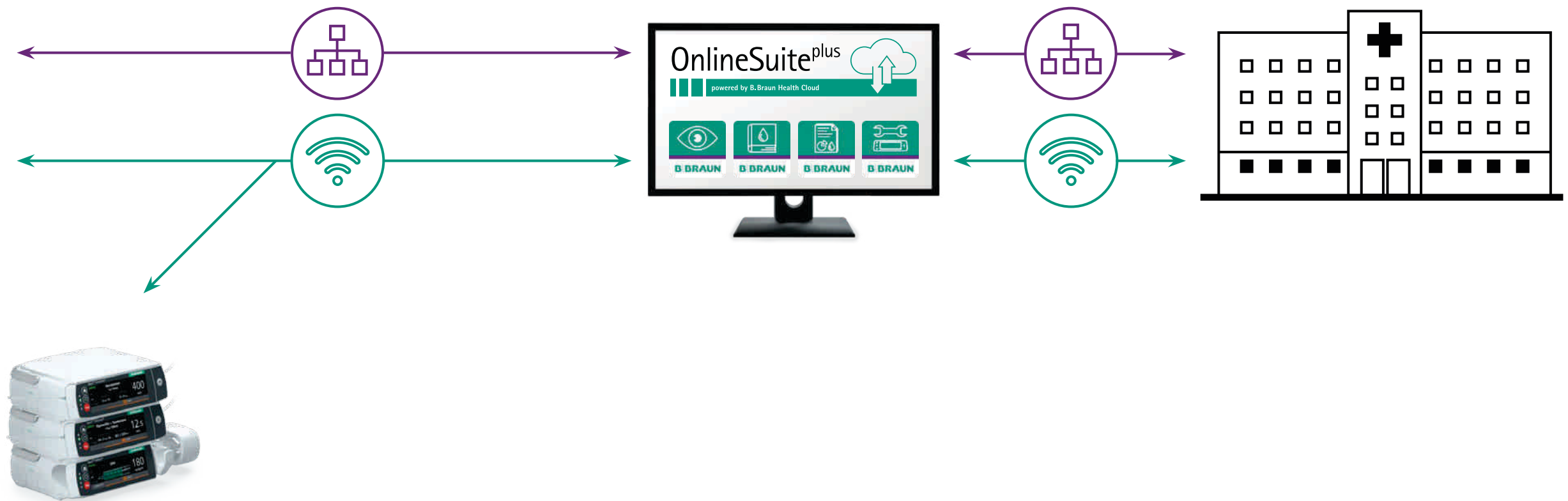
DISCHARGE
MANAGEMENT

Space^{plus} & OnlineSuite^{plus}

Advanced. Superior. Digital.

#spaceplus

A MILESTONE IN INFUSION THERAPY.



Welcome to Space^{plus} & OnlineSuite^{plus} –
our new Smart Infusion Ecosystem!

Space^{plus} and OnlineSuite^{plus} make up a unique ecosystem that allows for the seamless flow of data. Each pump is equipped with an integrated WiFi module, resulting in a continuous bidirectional exchange of data – even during transport.

70 YEARS
OF EXPERIENCE
IN INFUSION
PUMP SYSTEMS
SINCE 1951

ENGINEERED
& MADE
IN GERMANY



TODAY'S THERAPY.

Today's infusion pumps are designed to improve accuracy and reduce medication errors.

However, studies have shown that these devices are involved in 35-60% of the estimated 770,000 adverse drug events (ADEs) that occur each year.¹

In order to reduce infusion errors, hospitals demand smart devices that are connected to the hospital network.

More connectivity always comes with potential new vulnerabilities. Thus, a new technology is just as smart as its cyber security.⁶



30 %

OF SLEEP AROUSALS COME FROM ENVIRONMENTAL FACTORS, NOISES AND ALARMS IN THE ICU.

1. Van der Wal Y. A Datadriven Feasibility Study on Silent Pumps: Applying CRISP-DM in a Knowledge Discovery Process. Universiteit Utrecht 2017.

\$ 370,000

THE INCREMENTAL REVENUE GENERATED FROM THE REDUCTION IN KEYSTROKES WITH SMART PUMPS (FROM 15 TO 2 STROKES, OR 86% LESS)

2. Biltoft J, Finnemann L. Clinical and financial effects of smart pump–electronic medical record interoperability at a hospital in a regional health system. Am J Health-Syst Pharm. 2018; 75(14):1064–8.

15–19%

OF MEDICAL DEVICES ARE RUNNING ON OUTDATED OPERATING SYSTEMS WHICH POSES A SECURITY RISK.

3. <https://www.securitymagazine.com/articles/94381-healthcare-security-challenge-how-cyberattacks-are-evolving>

23,000

REPORTS OF MALFUNCTIONS AND INJURIES WHILE USING IV PUMPS WERE SUBMITTED.

4. Giuliano KK. Intravenous Smart Pumps : Usability Issues, Intravenous Medication Administration Error, and Patient Safety. Crit Care Nurs Clin. 2018; 30(2):215–24.

> 7 MILL.

PATIENTS ARE AFFECTED BY PREVENTABLE MEDICATION ERRORS, RESULTING IN ANNUAL COSTS OF OVER \$21 BILLION.

5. Da Silva BA, Krishnamurthy M. The alarming reality of medication error: a patient case and review of Pennsylvania and National data. J Community Hosp Intern Med Perspect. 2016 Sep 7;6(4):31758. <https://www.ncbi.nlm.nih.gov/pmc/articles/PMC5016741/>

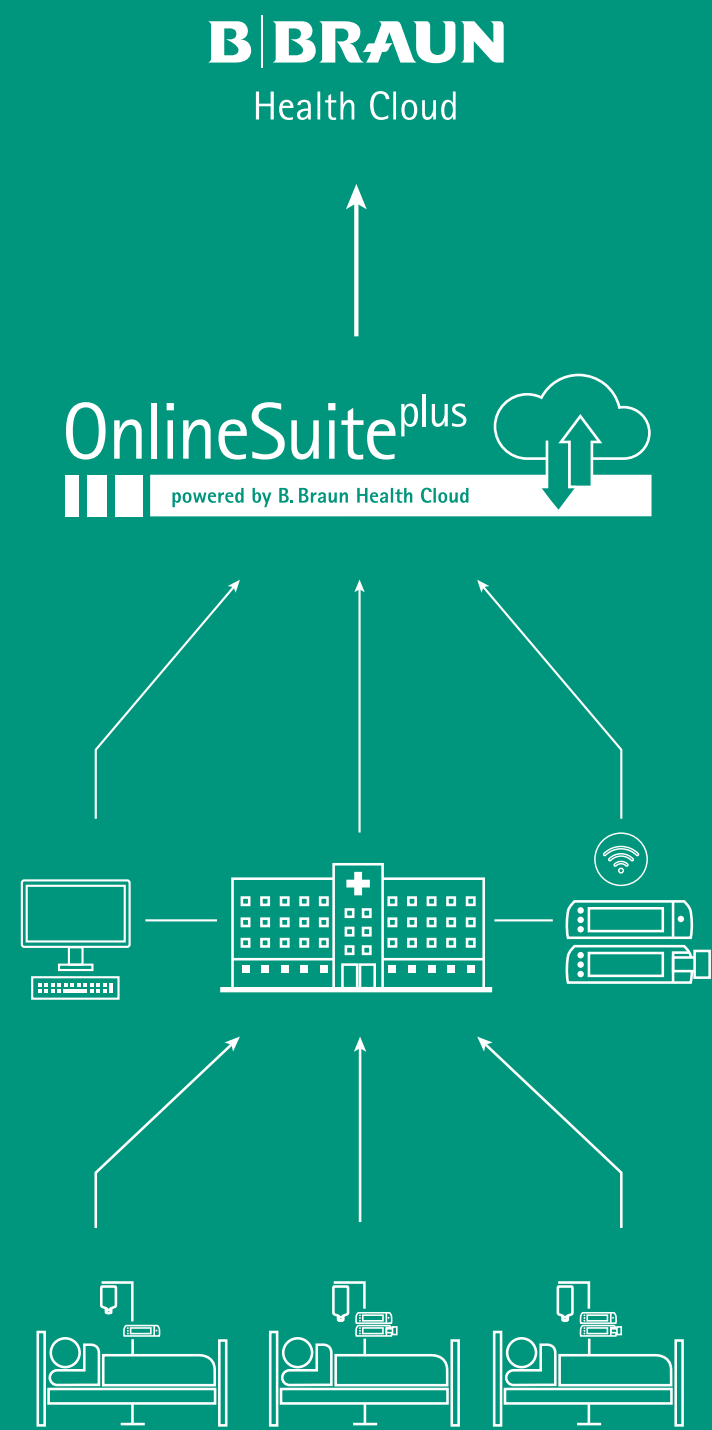
Please refer to the following pages to see how Space^{plus} & OnlineSuite^{plus} can help you resolve these problems.



#hospitaldigitalization

**THE DECISION FOR THIS
ADVANCED INFUSION SYSTEM
IS YOUR JOURNEY INTO THE
DIGITALLY ENHANCED
MEDICATION OF THE FUTURE.**

CONNECTING AN ECOSYSTEM.



The B. Braun Health Cloud connection provides the hospital with fully automatic updates and upgrades of software, access to E-Learnings, and further product information.

OnlineSuite^{plus} is the innovative IT platform providing software applications that help users to increase safety, efficiency, and therapy performance within the entire hospital.

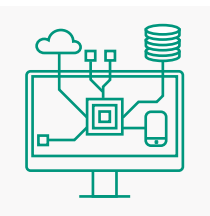
Space^{plus} infusion pumps are seamlessly connected to the hospital IT network thanks to the integrated WiFi module.

All infusion pumps may be used flexibly either in the station, as a single pump, or on transport.

FUTURE-ORIENTED TECHNOLOGY

SMART TECHNOLOGY SMART HOSPITALS

CYBER SECURITY
Data transmitted through the hospital network between the Space^{plus} infusion pumps and the OnlineSuite^{plus} servers is encrypted.



INTEROPERABILITY
Engineered to be seamlessly integrated into the hospital IT environment using the bi-directional HL7-IHE framework for data communication.



SEAMLESS DOCUMENTATION
Space^{plus} infusion pumps introduce an internal data buffer for data caching when no network connection is available.

CONNECTING AN ECOSYSTEM.

Space^{plus} in combination with OnlineSuite^{plus} is THE DIGITAL INFUSION SYSTEM for hospitals that want to offer their patients complex, individual, and safe infusion therapy with maximum medical options.

It is easy to integrate into hospital information systems with its state of the art interoperability and its advanced approach to **CYBER SECURITY**; the Space^{plus} system is the digital solution of choice for the healthcare sector.



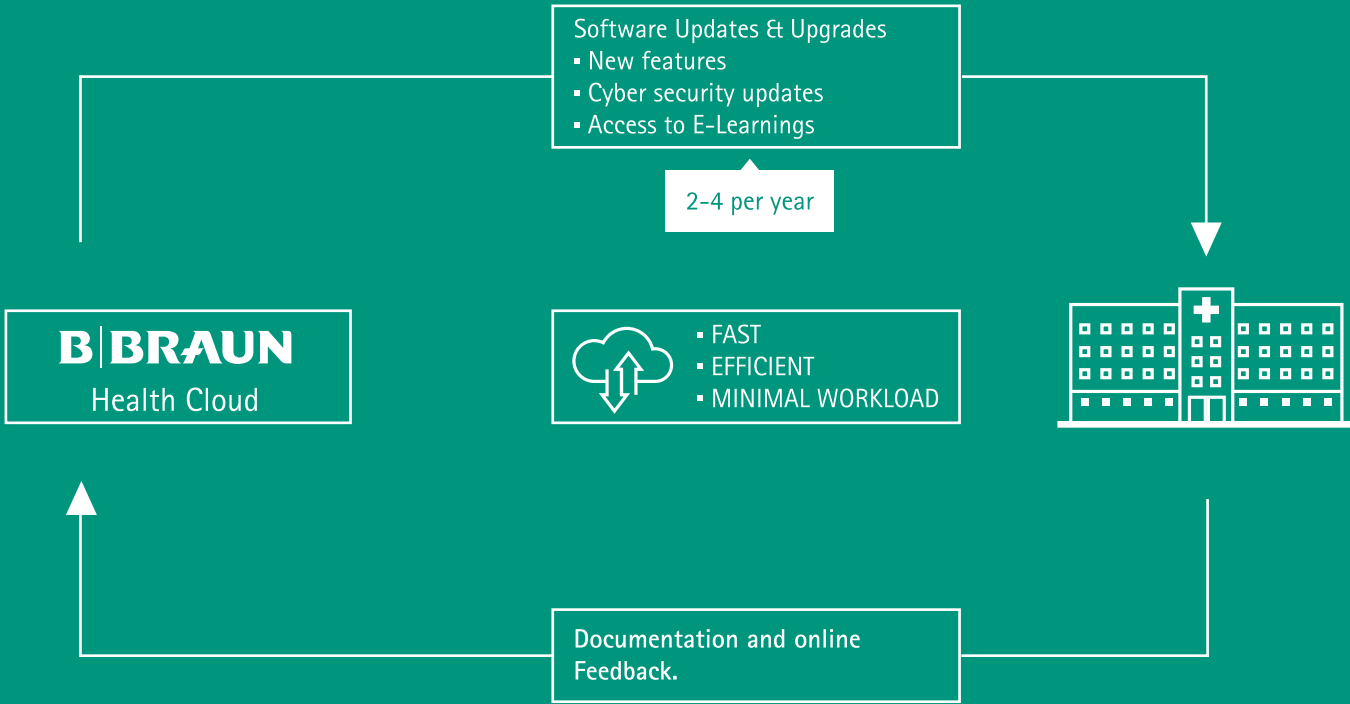
OnlineSuite^{plus} is the generation of innovative software applications for the digital management of B. Braun infusion pumps in hospitals.



#remotemaintenance

AFTER SYSTEM IMPLEMENTATION,
YOU'LL RUN A LOT OF MILES
LESS THROUGH THE HOSPITAL.

DIGITAL INFUSION PUMP UPDATES



DIGITAL WORKFLOW

MAKE PROGRESS NOT MILES

ZERO TOUCH DEPLOYMENT
Remote updates of infusion pumps via the hospital network without interrupting the clinical workflows.



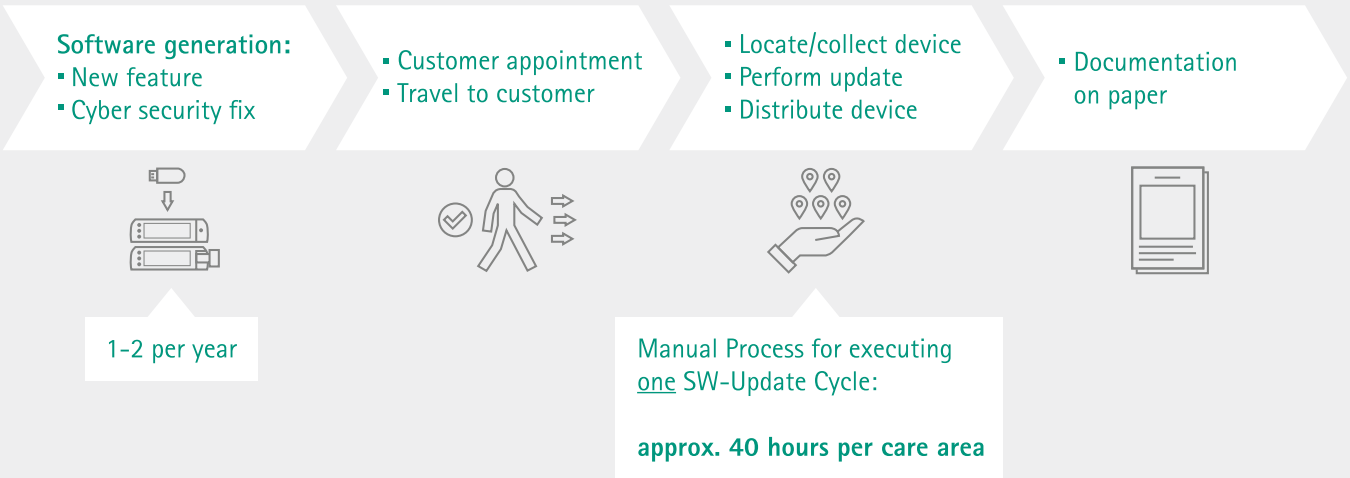
ALWAYS THE LATEST SOFTWARE
The B. Braun Health Cloud provides direct access to the latest software, E-Learnings, and further product information.



DRUG LIBRARIES ON THE FLY
Drug Library data is always up to date at the infusion pumps.



TODAY'S MANUAL PROCESS

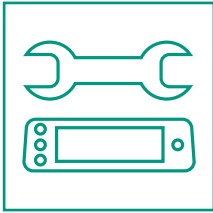


Manual processes for infusion pump updates are time consuming and interrupt clinical workflow due to the unavailability of infusion pumps during update procedures. These interruptions can last several weeks.

DRIVING DIGITALIZATION. HEALTHCARE 4.0.

Efficient processes for updating infusion devices with new **SOFTWARE AND DRUG LIBRARY DATA** through the hospital's network is an essential time-saving benefit for the biomedical engineering department.

Equally important from a clinical perspective is the fact that infusion therapy is not interrupted during the controlled **TRANSFER OF UPDATES**.



DeviceManager^{plus}
Technicians' centralized toolbox for managing infusion pumps across the entire hospital via its network.

BENCHMARK FOR WORKPLACE DESIGN AND FLEXIBILITY.

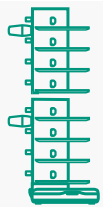


DESIGN & ENGINEERING

TRUST IN EXPERIENCE QUALITY OF LIFE

IP44 MOISTURE PROTECTION

Our pump is first in class with IP44 moisture protection against splashing water from any direction.



SUPERIOR WORKPLACE DESIGN

Giant possibilities in the smallest of spaces: The modular system allows for configurations of up to 24 pumps.

BATTERY CAPACITY

Long-lasting batteries set the staff free from inflexible wall sockets.



BENCHMARK FOR WORKPLACE DESIGN AND FLEXIBILITY.

Easy and tool-free **CONNECTION OF UP TO 6 STATIONS** that can be extended to a workstation for **UP TO 24 INFUSION PUMPS**. The station displays visual and audible alarms centrally, allowing for quicker alarm localization within the room. The innovative design supports routine tasks like cleaning and disinfection.



reddot winner 2021

iF International Forum Design





#userexperience

**ON THE FIRST DAY THE PUMP
MADE NURSES SMILE.**

EASE BY DESIGN.



EASE OF USE

TECHNOLOGY WITH A TOUCH EFFICIENCY WITH A SMILE

SYRINGE STATUS VIA UI

The new user interface makes it even easier for you to schedule syringe changes easily, as the fill status of the syringe is visualized on the screen.



INTUITIVE USER INTERFACE

The self-explanatory user interface guides healthcare safely owing to superior usability.



AT A GLANCE

Even from a distance, a pump alarm or a running infusion can be identified by name.



EASE BY DESIGN.

The operation of Space^{plus} is **USER-FRIENDLY AND INTUITIVE** and can be adapted to clinical workflows in order to reduce medication errors.

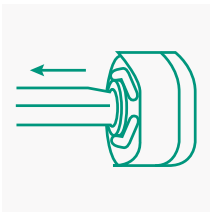
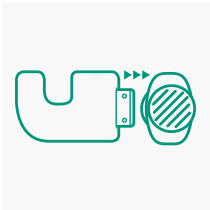
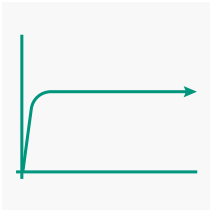
Both the Infusomat® and the Perfusor® have the **SAME DESIGN, INTERFACE, AND MENU STRUCTURE**. This means less training for healthcare professionals and a reduced risk of incorrect handling.

Space^{plus} allows one to **REACT QUICKLY, APPROPRIATELY, AND SAFELY**, without thinking.

INTERACT WITH TECHNOLOGY INTERFACE WITH LIFE

SYRINGE PISTON BRAKE

The unique syringe piston brake prevents freeflow and handling mistakes during syringe change.



OUTSTANDING ACCURACY

Precision determines health. Space^{plus} Perfusor® and Space^{plus} Infusomat® introduce new dimensions of delivery rate accuracy based on superior mechanical drive technology.

FULL AUTOMATIC DRIVE

The automatic drive technology allows for outstanding start-up when changing disposables: it's fast, safe, and highly accurate.

INFUSOMAT® MEETS PERFUSOR®

The innovative drive technology not only enables **OUTSTANDING STARTUP AND DELIVERY PERFORMANCE**, but also delivers safety and unique convenience when changing disposables – **FREEFLOW IS RELIABLY PREVENTED.**

Catecholamines are also not a problem as they can be administered with the Infusomat® **DUE TO IT'S CONSISTENTLY HIGH PRECISION.**

SUPERIOR DESIGN FOR MORE EFFECTIVENESS.

FLOW ACCURACY AT 25 ML/H

Flow

50.0

37.5

25.0

12.5

Space^{plus} Infusomat®

Competitor

Time

These graphs show the accuracy and uniformity of flow over time. It must be remembered that the delivery characteristics and the delivery accuracy are significantly affected by the disposable used.

Accurate and consistent flow rate are particularly important for high-alert medications that pose significant risk when improperly delivered.

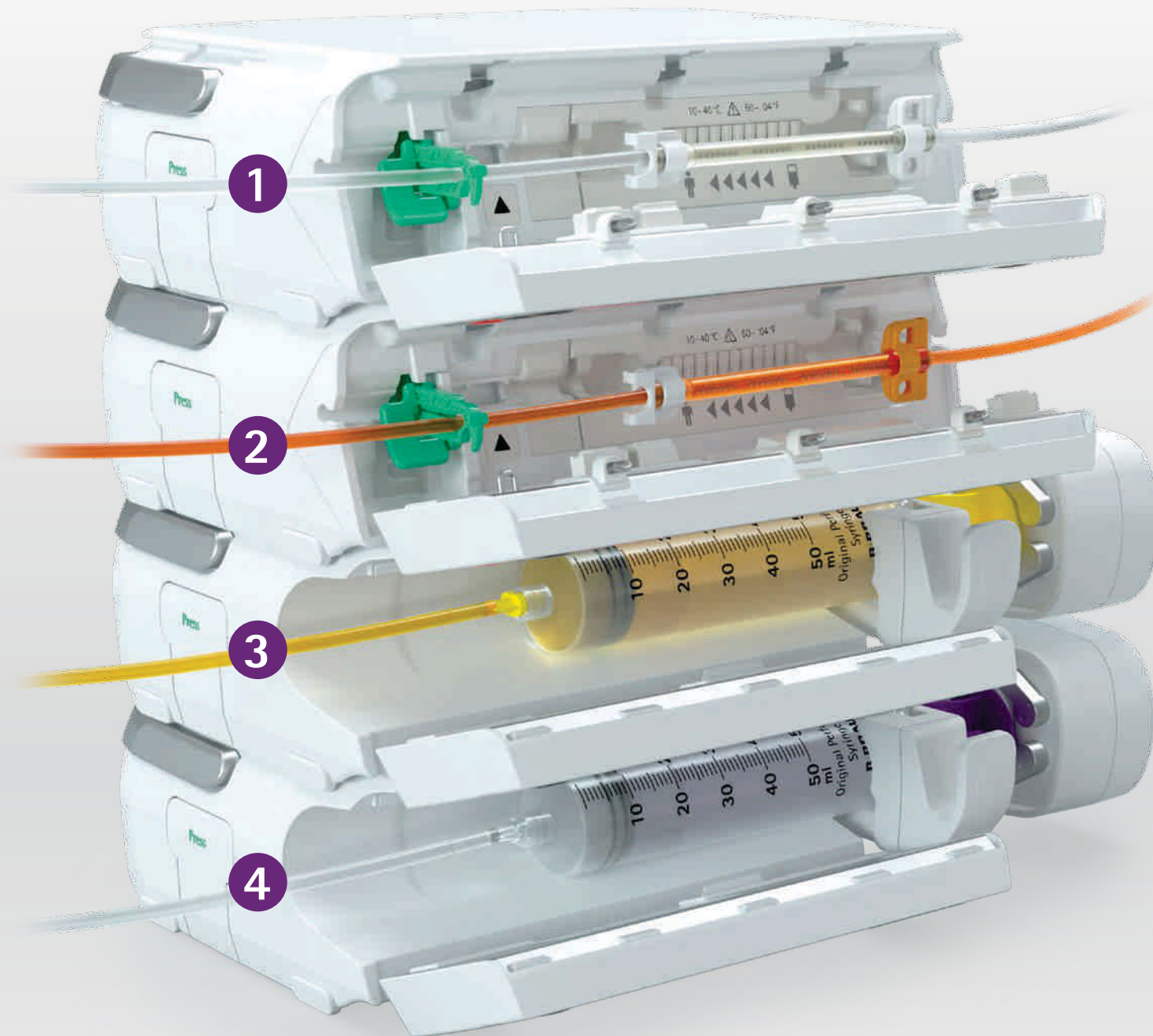


#userexperience

EVERYONE WILL FEEL THAT
THEY ARE GAINING GROUND –
SPACE FOR THERAPY.

DISPOSABLES

A WIDE RANGE OF THERAPIES INCLUDING DEDICATED DISPOSABLES



1 Standard
INFUSION THERAPY,
TCI, TIVA

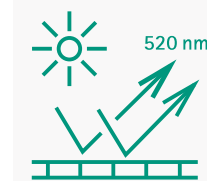
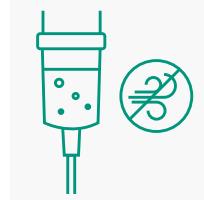
2 Light protected
PHOTOSENSITIVE
MEDICATION

3 NRFit®
PAIN THERAPY

4 ENFit®
NUTRITION THERAPY

SAFESET - AIRSTOP

The unique filter membrane at the bottom of the drip chamber prevents air from the container from entering the connection line thereby ensuring the line cannot run empty. This means less disconnection of lines.



LIGHT PROTECTED

Increased security through completely light-protected products, which supports the early detection of air bubbles and particles.

NRFit®

More safety in the area of regional anesthesia to avoid risks of misconnections between neuraxial and intravenous application. Guidance by connector design and color coding.



ENFit®

More safety in the area of enteral feeding to avoid risks of misconnections. Guidance by connector design and color coding.

DEDICATED THERAPIES, DEDICATED DISPOSABLES.

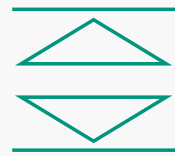
Dedicated disposables cover the full range of therapies: standard, light protected, transfusion, pain, antibiotic, enteral as well as closed systems for oncology.

With the Original Perfusor® syringes, B. Braun offers three-part disposable syringes with an excellent sliding performance which add to the proven delivery characteristics of the Space^{plus} Perfusor®.

Additionally, the Original Perfusor® lines provide the option of colour-coding to quickly identify highly potent drugs and to reduce the risk of confusion.

FLEXIBILITY IN USE

EVEN MORE PERFORMANCE EVEN MORE SPACE



DOSEGUARD™ – THE SAFER, THE BETTER

DoseGuard™ reduces the risk of medication errors by adding safety limits to therapies.

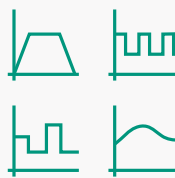


DRUG COLOR CODING
Space^{plus} offers multiple and individual drug color codes to support safety at first glance.



VARIOUS THERAPY MODES

Space^{plus} offers a variety of therapy modes for infusion, pain and nutrition therapies. For hospital-wide usage, no matter where!



Space^{plus} DrugLibrary Manager
Manage medication data centrally to configure your drug library according to the care unit and patient-specific needs.



THINK IN LARGER SCALES.

Space^{plus} covers a wide range of therapies for **ADULTS, PAEDIATRICS, AND NEONATES** for the delivery of parenteral and enteral fluids. These routes include, but are not limited to, **INTRAVENOUS, IRRIGATION/EPIDURAL, ENTERAL, AND PARENTERAL**.

THERAPY MODES reduce nurse workloads and allow for the higher standardization of therapies within the respective limits in order to reduce medication error.

The system allows for **SEAMLESS WORKFLOWS** during intra- and inter-hospital transfer, as well as during MRI Scans with the respective accessories.



A SCALABLE SOLUTION TO FIT YOUR NEEDS.

The smart ecosystem incorporates an exceptional overall package of leading technology and outstanding quality, sophisticated therapy options, interoperability, and efficient workflows.



OnlineSuite^{plus}

ONLINESUITE^{PLUS} IS THE GENERATION OF INNOVATIVE SOFTWARE APPLICATIONS FOR THE DIGITAL MANAGEMENT OF B. BRAUN INFUSION PUMPS IN HOSPITALS.

B. Braun Health Cloud

B. BRAUN HEALTH CLOUD PROVIDES DIRECT ACCESS TO THE LATEST SOFTWARE E-LEARNINGS, AND FURTHER PRODUCT INFORMATION.

New User Interface

SHOWS WHAT'S MOST IMPORTANT FOR AN EFFICIENT AND SWIFT OPERATION OF OUR INFUSION PUMPS.

Reliable Construction

THE DESIGN WITHSTANDS THE CHALLENGES OF EVERYDAY LIFE DUE TO ITS FLEXIBILITY, EVEN DURING TRANSPORT.

#spaceforyou

For the pragmatic. For the ones searching for ease and efficacy of use. For the many, not the few. For the early adopters that are always striving for more.

For the nurses and the physicians. For inventors, creators, makers. And of course, for the patients.

For the digital natives.
For the experts.

For You

Space^{plus}



LITERATURE

1. Van der Wal Y. A Datadriven Feasibility Study on Silent Pumps: Applying CRISP-DM in a Knowledge Discovery Process. Universiteit Utrecht 2017.
2. Biloft J, Finnemann L. Clinical and financial effects of smart pump-electronic medical record interoperability at a hospital in a regional health system. Am J Health-Syst Pharm. 2018; 75(14):1064-8.
3. <https://www.securitymagazine.com/articles/94381-healthcare-security-challenge-how-cyberattacks-are-evolving>
4. Giuliano KK. Intravenous Smart Pumps : Usability Issues, Intravenous Medication Administration Error, and Patient Safety. Crit Care Nurs Clin. 2018; 30(2):215-24.
5. Da Silva BA, Krishnamurthy M. The alarming reality of medication error: a patient case and review of Pennsylvania and National data. J Community Hosp Intern Med Perspect. 2016 Sep 7;6(4):31758. <https://www.ncbi.nlm.nih.gov/pmc/articles/PMC5016741/>
6. Smart Medication Delivery Systems: Infusion Pumps Healthcare Human Factors Group; April 2009